

Summary	
Product	Lakeland ALM Hood: 700 Series
Description	Aluminised Hood with detachable polycarbonate / gold foil faceshield. Two straps with brass snaps
Fabric & weight	545gsm Gentex "Dual Mirror" aluminised fibreglass / neoprene/foil moisture barrier / 160gsm fibreglass insulation layer
Visor material	2.86mm polycarbonate with outer gold foil
Styles Codes	710
Seam Type	Safety seam with FR para-aramid thread
Colour	Reflective aluminised silver



attached helmet inside thehood

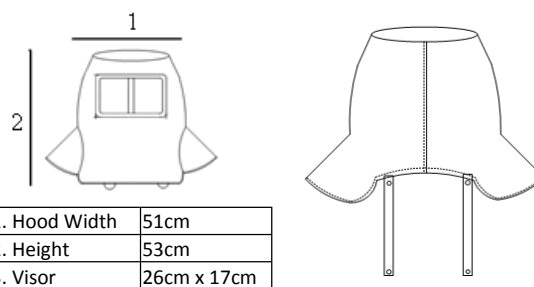


CE Certification		Result
EN Standard*	Description	
EN ISO 13688	Protective Clothing : General Requirements	Pass
EN ISO 11612	Clothing to protect against heat and flame	A1/A2/B3/C4/F3
EN ISO 11611	Protective clothing for use in welding and allied processes	Pass Class 1 & 2 A1 and A2

* All Lakeland garments are certified to the latest version of standards where possible

Mechanical Properties – 300 & 500			
EN Standard	Description	Result	EN Class
EN 13934	Tensile Strength	3879/2463 N	Pass
ISO 9073	Trapezoidal tear md/cd	69 / 66 N	Pass
ISO 13935-2	Seam Strength	530 N	Pass

Hood Dimensions



Note: Aluminised garments use the reflective "mirror" properties of the fabric surface to enhance heat resistance. Thus dirty or soiled garments may not work efficiently.

Fabric can be wiped clean with a light detergent

Heat and Flame Properties 300 & 500		
Standard	Description	Result
ISO 15025 A1	Flame Spread Face Ignition	Class 1 + 2 Pass
ISO 15025 A2	Flame Spread Edge Ignition	Class 1 + 2 Pass
ISO 17493	Heat Resistance	Pass
ISO 9151	Convective Heat	87.3 s B3
ISO 6942	Radiant Heat	>600s C4
EN348	Small Hot Metal Drops	41.9s B3

Key features

- Hood for use with ALM 700 series
- Detachable Polycarbonate / gold foil plated visor with high heat resistance (thicker than 300/500 serieshood)
- Rear straps with front brass snap fasteners
- Fabric construction according to 700 series garment
- Available in versions to use with suits with and without BA accommodation

Suggested applications/industries

- Power generation
- Cement manufacture
- Foundries
- Ceramic and glass manufacture
- Chemical Processing

Fabric Construction		
Series	300	500
Inner Layer	160gsm nylon taffeta insulation layer	
Middle Layer	Neoprene/aluminium foil moisture barrier	
Outer layer	Aluminised fibreglass –Gentex "Dual Mirror"® 545gsm	

Available Styles	
Description	Code
Hood With Face Shield	710

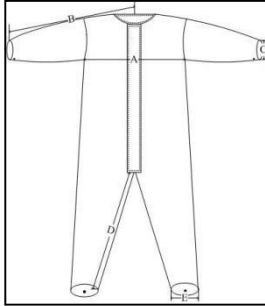
Other Information

ALM Garment Sizing

Lakeland ALM garments are designed to be over sized and should be baggy and loose to wear. They are generally worn over other clothing and effectiveness of any heat protective workwear is reduced if garments are worn tightly. Ensure undergarments are made from natural fibres and not fibre or fabric that may ignite or melt in hot environments.

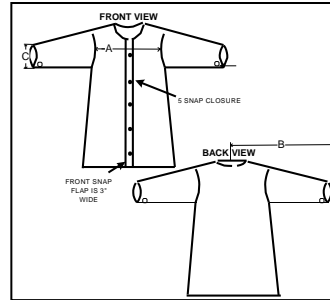
ALM coveralls, jackets and pants are supplied in standard sizes. Special sizes can be made to order. General sizing of garments and of the BA accommodation is shown below:-

Coverall



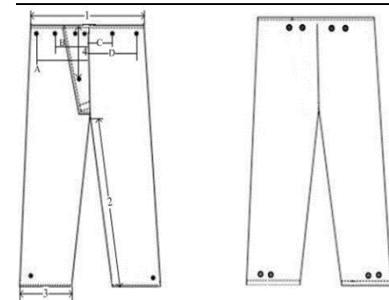
		S	M	L	XL	2XL
A	Chest	63	66	70	74	78
B	Sleeve	86	86	89	91	94
C	Cuff	16	17	17	18	18
D	Inseam	71	71	71	71	71
E	Ankle	31	31	31	32	33

Jacket



		S	M	L	XL	2XL
A	Chest	64	66	68	73	80
B	Sleeve	80	81	83	86	90
C	Cuff	17	16	16	17	18

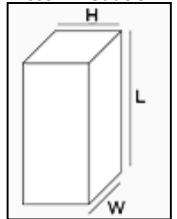
Pants



		S	M	L	XL	2XL
1	Waist	50	51	53	58	61
2	Inseam	71	73	73	73	74

BA

Accommodation



L	57
W	22
H	18

Other Design Features

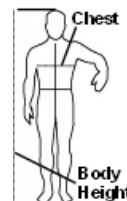
Coverall - Circle collar / 5 x brass snaps and FR Nomex® zipper front closure / one snap cuff adjustment / two-snap ankle adjustment / safety stitch, para aramid thread seams

Jackets - Circle collar / Five brass snaps front closure / one-snap cuff adjustment / safety-stitch seams with FR para-aramid thread

Pants - FR brass snaps front fly / FR brass snaps for suspender attachment / two-snap ankle adjustment / Safety stitch seams with FR para-aramid thread

Size Selection

In general users can use the standard Lakeland CE size selection chart as below. Choose oversized garments.



Size	Body Height	Chest
S	164-170cm	84-92cm
M	170-176cm	92-100cm
L	176-182cm	100-108cm
XL	182-188cm	108-116cm
XXL	189-194cm	116-124cm
XXXL	194-200cm	124-132cm

Cleaning, storage, shelf life and disposal

Cleaning

Soiled garments will not work effectively. Dirt and soot can be wiped clean with a light detergent. Oil and grease can normally be removed with dry-cleaning solvents (not containing isopropanol or perchloroethylene which may react with the surface). Clean solvents with water. After cleaning dry with a clean, dry cloth. Do not use cleaning agents containing ammonia, chlorine or abrasive agents. Do not machine wash.

Storage

Store in cool, dry & well ventilated areas where possible. Use fans where appropriate. Keep away from direct heat and sunlight. Hang in ample space to avoid folding or creasing.

Shelf-Life

Garments should be kept clean and free from soiling. Do not use soiled or contaminated garments as this may affect performance. Garments kept clean and in good condition can be used for 5 years or more *if clean and undamaged*.

Disposal

Can be disposed of by incineration or to landfill according to local regulations. However, any garments contaminated with chemicals must be disposed of according to the requirements of the chemical or decontaminated before disposal