



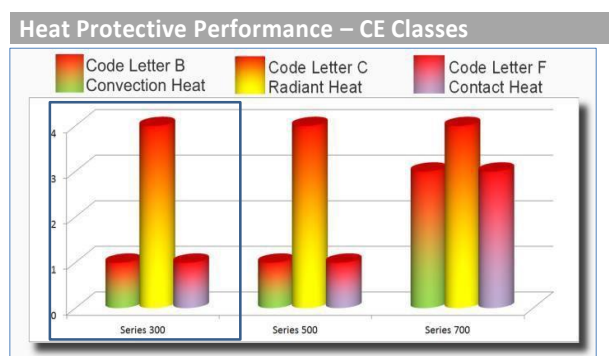
Summary	
Product	<b>Lakeland ALM Series 300</b>
Description	Designed for areas of high radiant and low ambient temperatures – the aluminised glass fabric provides effective protection with flexibility.
Fabric & weight	545gsm Gentex “Dual Mirror” aluminised reflective fibreglass
Styles (see below)	See style codes below
Seam Type	Safety seam with para-aramid FR thread
Colour	Reflective aluminised silver

CE Certification		
EN Standard*	Description	Result
EN ISO 13688	Protective Clothing: General Requirements	Pass
EN ISO 11612	Clothing to protect against heat and flame	A1/A2/B1/C4/D1/E1/F1
EN ISO 11611	Protective clothing for use in welding and allied processes	Pass A1 and A2

\* All Lakeland garments are certified to the latest version of standards where possible

Mechanical Properties			
EN Standard	Description	Result	EN Class
EN 13934	Tensile Strength	3879/2463 N	Pass
ISO 9073	Trapezoidal tear md/cd	89.7/76.4 N	Pass
ISO 5082	Seam Strength	492/884 N	Pass

The Heat Performance Graph is intended to assist in garment selection. It shows results for 300, 500 and 700 for comparative purposes, based on classes according to Convective Heat (Code B), Radiant Heat (C) and Contact Heat (F). Classes relate to the time taken to raise the temperature behind the fabric sufficiently to cause a 2<sup>nd</sup> degree burn (see standards). Actual results are shown in the table below. Results are based on lab tests and are not intended to imply guarantee of “safe-use” in any particular application as conditions may vary considerably. A suitable risk assessment should always be carried out by trained personnel as part of a garment selection process



Heat and Flame Properties		
Standard	Description	Result
ISO 15025 A1	Flame Spread Face Ignition	Class 1 + 2 Pass
ISO 15025 A2	Flame Spread Edge Ignition	Class 1 + 2 Pass
ISO 17493	Heat Resistance	Pass
ISO 9151	Convective Heat	9.5s – B1
ISO 6942	Radiant Heat	72.8s – C4
ISO 9185	Molten Aluminium splash	>100g – D1
ISO 9185	Molten Iron splash	>60g – E1
ISO 12127	Contact Heat	F1

Fabric Construction	
Inner Layer	None
Middle Layer	None
Outer layer	545gsm Aluminised fibreglass – Gentex “Dual Mirror”®

Note: Aluminised garments use the reflective “mirror” properties of the fabric surface to enhance heat resistance. Dirty or soiled garments may not work efficiently. Fabric can be wiped clean with a light detergent

Available Styles			
Description	Code	Description	Code
Hood Without Helmet	<b>310-E</b>	Coverall With BA Accommodation	<b>322BA</b>
Hood With BA Accommodation (Without Helmet)	<b>310BA-E</b>	Trousers With Suspenders ( Braces)	<b>330</b>
Reduced Peak Safety Helmet	<b>407500</b>	Gloves	<b>344</b>
Jacket	<b>320</b>	Boots	<b>355</b>
Jacket With BA Accommodation	<b>320BA</b>	Storage Bag	<b>PKG13-E</b>
Coverall	<b>322</b>		



For further information see [www.lakeland.com/europe](http://www.lakeland.com/europe) or contact [sales-europe@lakeland.com](mailto:sales-europe@lakeland.com)  
No information provided is intended to guarantee product suitability for any specific application:

It is always the users’ responsibility to ensure garment suitability

Lakeland Industries Europe Ltd, Unit 9-10, Jet Park, Jet Park Way, Newport, East Yorkshire, UK HU15 2JU  
UK Company Registration No: 4500660: For company financial information see [www.lakeland.com/financial](http://www.lakeland.com/financial)



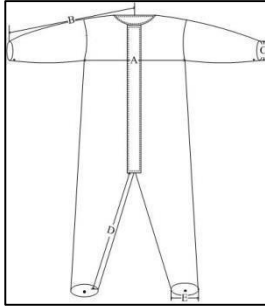
## Other Information

### ALM Garment Sizing

Lakeland ALM garments are designed to be over sized and should be baggy and loose to wear. They are generally worn over other clothing and effectiveness of any heat protective workwear is reduced if garments are worn tightly. Ensure undergarments are made from natural fibres and not fibre or fabric that may ignite or melt in hot environments.

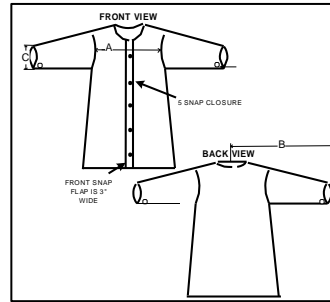
ALM coveralls, jackets and pants are supplied in standard sizes. Special sizes can be made to order. General sizing of garments and of the BA accommodation is shown below:-

**Coverall**



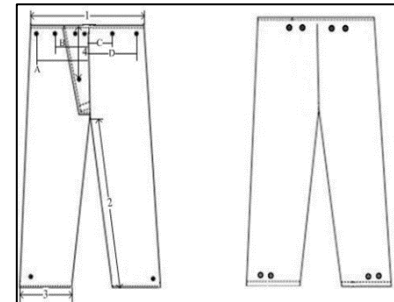
		S	M	L	XL	2XL
<b>A</b>	Chest	63	66	70	74	78
<b>B</b>	Sleeve	86	86	89	91	94
<b>C</b>	Cuff	16	17	17	18	18
<b>D</b>	Inseam	71	71	71	71	71
<b>E</b>	Ankle	31	31	31	32	33

**Jacket**



		S	M	L	XL	2XL
<b>A</b>	Chest	64	66	68	73	80
<b>B</b>	Sleeve	80	81	83	86	90
<b>C</b>	Cuff	17	16	16	17	18

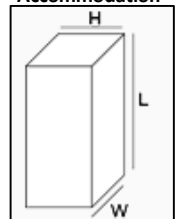
**Pants**



		S	M	L	XL	2XL
<b>1</b>	Waist	50	51	53	58	61
<b>2</b>	Inseam	71	73	73	73	74
<b>3</b>	Ankle	28	28	29	30	30

**BA**

**Accommodation**



<b>L</b>	57
<b>W</b>	22
<b>H</b>	18

### Other Design Features

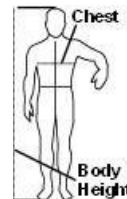
**Coverall** - Circle collar / 5 x brass snaps and FR Nomex® zipper front closure / one snap cuff adjustment / two-snap ankle adjustment / safety stitch, para aramid thread seams

**Jackets** - Circle collar / Five brass snaps front closure / one-snap cuff adjustment / safety-stitch seams with FR para-aramid thread

**Pants** - FR brass snaps front fly / FR brass snaps for suspender attachment / two-snap ankle adjustment / Safety stitch seams with FR para-aramid thread

### Size Selection

In general users can use the standard Lakeland CE size selection chart as below. Choose oversized garments.



Size	Body Height	Chest
<b>S</b>	164-170cm	84-92cm
<b>M</b>	170-176cm	92-100cm
<b>L</b>	176-182cm	100-108cm
<b>XL</b>	182-188cm	108-116cm
<b>XXL</b>	189-194cm	116-124cm
<b>XXXL</b>	194-200cm	124-132cm

## Storage, Shelf-life and Disposal

### Cleaning

Soiled garments will not work effectively. Dirt and soot can be wiped clean with a light detergent. Oil and grease can normally be removed with dry-cleaning solvents (not containing isopropanol or perchloroethylene which may react with the surface). Clean solvents afterwards with water. After cleaning, dry with a clean, dry cloth. Do not use cleaning agents containing ammonia, chlorine or abrasive agents. Do not machine wash.

### Storage

Store in cool, dry & well ventilated areas where possible. Use fans where appropriate. Keep away from direct heat and sunlight. Hang in ample space to avoid folding or creasing.

### Shelf-Life

Garments should be kept clean and free from soiling. Do not use soiled or contaminated garments as this may affect performance. Garments kept clean and in good condition can be used for 5 years or more *if clean and undamaged*.

### Disposal

Can be disposed of by incineration or to landfill according to local regulations. However, any garments contaminated with chemicals must be disposed of according to the requirements of the chemical or decontaminated before disposal