



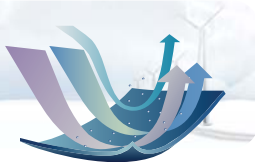
Cold Protection



Lakeland is always committed to the design and innovation of clothing, and combining outdoor elements and workwear practicability, we can offer you a wide range of quality products, superb designs and attentive service. The outer fabric is usually multifunctional and composite, with windproof, waterproof, breathable or other functions. The coating or laminating is also used on the different fabrics for the better performance. Meanwhile, the seam is an important factor, for example, the sealed seam is always used on the waterproof clothing. For the different cold environment, Lakeland can offer many types of warm liner material, such as 3M Thinsulate, Fellex fiber, polyester fiber, polar fleece etc.

Outdoor Clothing

Why to prevent wind?



- Wind-cold effect: the cold level is different under the same environmental temperature and different wind speeds.
- How about the cold level under the different wind speeds when the environmental temperature is 10°C.

No wind	10°C
30km/h(Level 5)	1°C
50km/h(Level 7)	-2°C

Why to prevent rain and snow?



- The body temperature drops as soon as it is drenched.
- Greatly reduce the thermal performance after the insulation liner encounter water.

Why to be breathable?



- Decrease the muggy and promote the comfort.

How to defend against cold?



- The effect against cold depends on the liner material and weight.

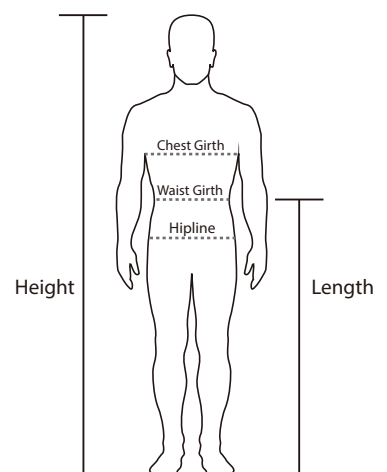
Size Selection

Size chart for men's winter jacket (cm)

Size	SM	MD	LG	XL	2X	3X	4X
Height	163~167	168~172	173~177	178~182	183~187	188~192	192~197
Chest Girth	108	112	116	120	124	128	132
Waist Girth	104	108	112	116	120	124	128

Size chart for BR203 for women's winter jacket (cm)

Size	XS	SM	MD	LG	XL	2X
Height	156~160	161~165	166~170	171~175	176~180	181~185
Chest Girth	96	100	104	108	112	116
Waist Girth	88	92	96	100	104	108
Hipline	98	102	106	110	114	118



Size chart for Winter Pants (cm)

Size	SM	MD	LG	XL	2X	3X
Height	163~167	168~172	173~177	178~182	183~187	188~192
Length	103	105	107	109	111	113
Hipline	76~92	80~96	84~100	88~104	92~108	96~112

D140/D141/D145 Outdoor Jacket

Durable, Breathable

- Nylon fabric, Waterproof treatment, breathable, tough and durable;
- Fabric With antistatic treatment reduces the electrostatic effect in winter;
- 140gsm Fellex filling, which compares favourably with natural down feather;
- Jacket, zipper ffront, two insert pockets, elastic wrist and hem;
- Be applicable in -10℃~+10℃ environment.



D145



Nylon fabric



Attached hood



Insert pocket



D140



D141



Vertical collar



Insert pocket



Portable bag



Compare favourably with natural down feather, Meet the ecological certification

Fellex® FS fiber is a kind of ecological insulation of multi-layer structure that appears to have good bulkiness and resilience performance. So, it can compare favourably with natural down feather, durable in use, lightweight, warmth, comfortable and air permeable.

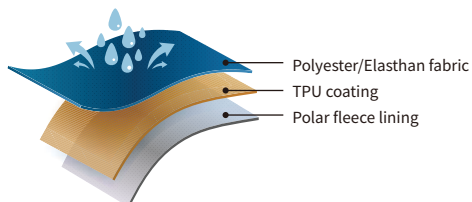
Product Style	Product Name	Description	Sizes	Package
D140 (black)	Outdoor Jacket	Jacket, Nylon fabric, waterproof, anti-static, breathable, durable; 140gsm Fellex filling; zipper front, two insert pockets, elastic wrist and hem.	SM ~ 4X	12
D141 (blue)				
D145 (blue-black)				

SF12 Softshell Jacket



Waterproof, Breathable

- Fabric: 96% Polyester/4% Elasthan fabric with TPU coating, micro-polar fleece lining;
- Level 4 lotus leaf type water/oil repellent
- TPU coating, waterproof 8000mm W/P, moisture absorption and sweat releasing, 3000g/m²·24h;
- Micro-polar fleece lining, keep warm and comfortable;
- Suitable for spring/late autumn/early winter wear.



Zipper pockets



Adjustable cuff with Velcro



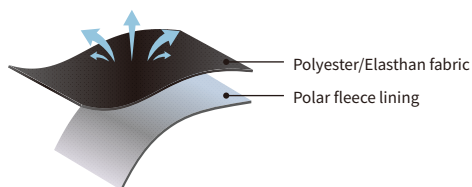
Hem with elastic drawstring



Anti-scratch collar

Product Style	Product Name	Description	Sizes	Package
SF12	Softshell Jacket	96% Polyester/4% Elasthan fabric with TPU coating, micro-polar fleece lining, waterproof, breathable	SM-4X	10

SF10 Softshell Jacket



Comfortable, Breathable

- Fabric: 96% Polyester/4% Elasthan fabric, micro-polar fleece lining;
- Level 4 lotus leaf type water/oil repellent
- Micro-polar fleece lining, keep warm and comfortable;
- Suitable for spring/late autumn/early winter wear;
- Can match with Lakeland outer jacket.



Anti-scratch collar

Durable and soft fabric

Zipper pockets

Elastic cuff

Product Style	Product Name	Description	Sizes	Package
SF10	Softshell Jacket	96% Polyester/4% Elasthan fabric, micro-polar fleece lining, breathable, can match with Lakeland outer jacket.	SM-4X	10

T200/T300 Winter Inner Jacket

Warmer, Breathable, Single Wear or Match with Outer Jacket

- Polyester fabric, AC coating for anti-drilling;
- Fills with 3M Thinsulate™ fiber;
- Collar with lining of polar fleece;
- Meet the requirement of GB/T18398-2001 when matching with the outer jacket;
- T200 is applicable at -10~-20°C, T300 is applicable at -25~-40°C.



Collar with lining of polar fleece



Insert pocket



Type	Product Style	Product Name	Description	Sizes	Package
Inner Jacket	T200	200gsm 3M Thinsulate™	Applicable at -10~-20 °C	SM~4X	5
Inner Jacket	T300	300gsm 3M Thinsulate™	Applicable at -25~-40 °C	SM~4X	5

F280 Polar Fleece Inner Jacket

Lightweight, sweat-absorption and flash drying, Anti-pilling, Single Wear or Match with Outer Jacket

- 280 gsm polar fleece fabric, double brush fleece, comfortable and breathable;
- Durable, anti-pilling, warm;
- Two insert pockets outside, two pockets inside;
- Applicable at -5~5 °C.



Type	Product Style	Product Name	Description	Sizes	Package
Inner Jacket	F280 (black)	280gsm polar fleece	Polar fleece, double brush fleece, applicable at -5~5 °C	SM~4X	10

PR10/11/12 Outer Jacket

Waterproof & Breathable, Comfortable & Durable

- Fabric: Nylon Taslan fabric coated with PU;
- Waterproof and breathable. 3000mm W/P, 3000g/m²·24h;
- Waterproof seam, storm flap, functional pockets;
- Hem with elastic drawstring.
- Adjustable elastic cuff with Velcro;
- Can match with a variety of warm liners.



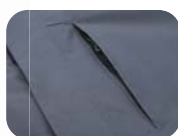
Ventilation underarm



Waterproof fabric and seam



Anti-scratch collar



Pocket on left chest



PR10

PR11

PR12

Type	Product Style	Product Name	Description	Sizes	Package
Jacket	PR10 (Grey)	Outer Jacket	Nylon Taslan fabric coated with PU, comfortable, soft, durable, waterproof and breathable	SM ~ 4X	10
	PR11 (Green)				
	PR12 (Blue)				

PR20 Outer Jacket

Durable, Waterproof and Breathable

- Oxford polyester fabric coated with PU;
- Waterproof and breathable, 3000mm W/P, 3000g/m²·24h
- Waterproof seam, storm flap, functional pockets;
- Can match with a variety of warm liners.



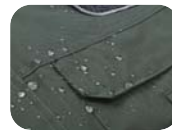
Chest pockets for tools



Anti-scratch collar



Front and rear reflective selvedge design



Waterproof fabric and seam



Type	Product Style	Product Name	Description	Sizes	Package
Jacket	PR20	Outer Jacket	Oxford polyester fabric with PU coating, comfortable, durable, waterproof and breathable.	SM ~ 4X	10

BR11 Outer Jacket

Waterproof, Breathable

- Polyester fabric coated with TPU;
- Waterproof 3000mm W/P, breathable 3000g/m² · 24h;
- Waterproof seam, storm flap, functional pockets;
- Hem with elastic drawstring.
- Adjustable elastic cuff with Velcro;
- Can match with a variety of warm liners.



Waterproof pocket



Comfortable anti-scratch collar



Reflective design on the front, rear chest and arm

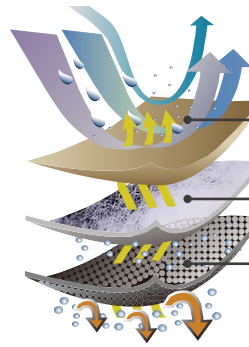


Type	Product Style	Product Name	Description	Sizes	Package
Jacket	BR11	Outer Jacket	Polyester fabric coated with TPU, fashionable, waterproof and breathable.	SM ~ 4X	10

TD150/151 Outdoor Winter Jacket

MD-LONG STYLE, Teflon and TPU coating, Soft and Comfortable

- Polyester pongee fabric with Teflon coating on the outer layer and TPU coating on the inner layer;
- Water repellency, oil repellency and stain resistance;
- Waterproof 5000mm W/P, breathable 5000g/m² 24h, waterproof seam;
- Detachable hood, waterproof front zipper, functional pockets;
- Fill with 150gsm 3M Thinsulate fiber, High efficiency heat reflective lining system to keep body warm.



Outer layer: Teflon processing and TPU coating, water repellency, oil repellency and stain resistance
 Filler: 150gsm 3M Thinsulate fiber
 Lining: High efficiency heat reflective lining system to keep body warm



Teflon Coating



Permeability Technology



Three-dimensional Design



Keep Warm



Teflon processing



waterproof zipper



two in one pocket (hand-warmer pocket and vertical pocket)



High efficiency heat reflective lining system to keep body warm



TD150



TD151

Product Style	Product Name	Description	Sizes	Package
TD150 (Black)	Outdoor Winter Jacket	Polyester pongee fabric with Teflon coating on the outer layer and TPU coating on the inner layer; Fill with 150gsm 3M Thinsulate fiber, High efficiency heat reflective lining system to keep body warm.	SM ~ 4X	5
TD151 (Khaki)				

BR203 Outdoor Winter Jacket For Women

Light & Comfortable, Waterproof & Breathable

- Nylon Taslon fabric coated with PU;
- Waterproof 3000mm W/P, breathable 3000g/m²·24h;
- Waterproof seam, storm flap, functional pockets;
- Hem with elastic drawstring. Adjustable elastic cuff with Velcro;
- Fill with 200gsm 3M Thinsulate™.



Ventilation underarm



Polar fleece liner on collar



Zipper pocket



Left inner pocket



Product Style	Product Name	Description	Sizes	Package
BR203	Women Outdoor Jacket	Nylon Taslon fabric coated with PU, soft, comfortable, durable, waterproof and breathable, with 200gsm 3M Thinsulate™ liner, applicable at -10℃ ~ -20℃. meet the requirement of GB/T 18398-2001	XS ~ 2X	5

AF102 Antistatic and Flame Resistant Jacket

Extensive Applications: petroleum, mining, chemical industry etc

- High-quality poly oxford fabric, durable;
- Coated with PU, waterproof, >5000mm, breathable, >4850g/m² · 24h;
- Outer fabric meets EN1149-5 antistatic standard and EN14116 flame resistance standard.
- 200gsm 3M Thinsulate™ fiber, efficient cold protection;
- Hood can be put into the collar.



Zipper and velcro design



Reflective design



Waterproof fabric and joint



Hidden hood



Reflective design



AF102



AF103

Product Style	Product Name	Description	Sizes	Package
AF102 (navy blue)	Antistatic and flame resistant jacket	High-quality poly oxford fabric, durable, Coated with PU, waterproof, >5000mm, breathable, >4850g/m ² · 24h; Outer fabric meets EN1149-5 antistatic standard and EN14116 flame resistance standard; 200gsm 3M Thinsulate fiber, efficient cold protection.	SM ~ 4X	5
AF103 (yellow)				

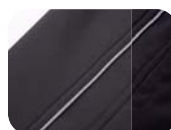
P601 Outdoor Winter Pants

Elastic Composite Fabric, Waterproof and Breathable

- Polyester 4-way elastic fabric + laminated micro fleece, with TPU coating;
- Waterproof and breathable, 3000mm W/P, 3000g/m²·24h;
- Medium thickness, suitable for autumn and winter;
- Elastic waist, multi-function pockets, reflective stripe on the both sides.



Elastic waist



Reflective stripe



Right pocket



Art. NO.	Product Style	Product Name	Description	Sizes	Package
855000	P601	Outdoor winter pants	Polyester 4-way elastic fabric + laminated micro fleece, with TPU coating	SM ~ 4X	5

P603 Outdoor Winter Pants

Durable, Waterproof, Breathable (Removable braces)

- Nylon Taslan fabric coated with PU;
- Waterproof 3000mm W/P, breathable 3000g/m²·24h;
- Elasticated waist, compliant with belt or braces;
- Multi-functional pockets;
- Bottom of leg with zip for cold protection;
- Fill with 3M Thinsulate™ fiber.



Elastic braces, waist, belt



Leg pocket



Leg pocket



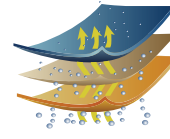
Bottom of leg with zip and flap



Product Style	Product Name	Description	Sizes	Package
P603	Outdoor Winter Pants	Nylon Taslan fabric coated with PU. Soft, comfortable, durable, waterproof and breathable. Filled with Thinsulate which applicable at -10°C ~-20 °C.	SM ~ 3X	5
P603AF	Outdoor Winter Pants	FR and antistatic Nylon fabric coated with PU, which is same as the outer fabric of AF102. Waterproof and breathable, fill with 3M Thinsulate™ fiber, applicable at -10 C~-20 C.	SM ~ 3X	5

9065 Winter Vest

- Polyester-cotton fabric, Polyester taffeta lining, with 160g/m Warm polyester filler;
- Front and rare retro-reflective line design;
- Pockets for radio and tools;
- Color: navy blue



Breathable



Pockets on front chest for tools



Reflective line design on front and rear chest, double-deck shoulder cuff



Elastic waist



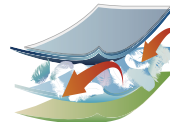
Zipper pockets for tools



Product Style	Product Name	Description	Sizes	Package
9065	Winter vest	Polyester-cotton fabric, polyester taffeta lining, with 160gsm warm polyester filler, reflective line design and pockets for radio, tools.	SM ~ 4X	10

9045 Winter Vest

- 210T Polyester pongee coated with down proof AC; Polyester satin lining with 220g/m² Warm polyester filler;
- 2 pockets, resin zip;
- Color: royal blue



Anti-drilling



Coated with anti-drilling down AC, waterproof



Zipper pockets



Shoulder cuff



Product Style	Product Name	Description	Sizes	Package
9045	Winter vest	210T polyester pongee coated with down proof AC, polyester satin lining with 220gsm warm polyester filler.	SM ~ 4X	10

H201 Multi-functional Winter Hood

- Cold protection for head, nose, mouth, chin and ears;
- Made from polar fleece, which is non-pilling, soft and comfortable;
- Used with Lakeland winter clothing for great cold protection effect;
- Color: black



Product Style	Product Name	Description	Sizes	Package
H201	Multi-functional Winter Hood	Cold protection for head, nose, mouth, chin and ears; Made from polar fleece, which is non-pilling, soft and comfortable.	one size	100